



1998 JCI ASPAC  
MACAU CONFERENCE

**BID DOCUMENT**

Hosted by Pan-Mac Junior Chamber, Macau



**\*\* ----- THE JCI CREED ----- \*\***

We believe:

That faith in God gives meaning and purpose to human life;

That the brotherhood of man transcends the sovereignty of nations;

That economic justice can best be won by free man through free enterprise;

That government should be of laws rather than of men;

That earth's great treasure lies in human personality; and

That service to humanity is the best work of life.

**\*\* ----- \*\***

## CONTENTS

	<u>Page</u>
* Message from Dr. Jorge Rangel - Secretary for Public Administration, Education and Youth Affairs, Government of Macau	1
* Message from Dr. Jose Luis de Sales Marques - President of Macau Municipal Council	2
* Message from Eng. Joao Manuel Costa Antunes - The Director of the Macau Government Tourist Dept.	3
* Message from Senator Frederick Yip - National President 1996 of Macau Junior Chamber	4
* Message from Senator Chui Sai Cheong - Conference Director of 1988 JCI ASPAC Macau Conference, Charter President of Macau Junior Chamber	5
* Message from Senator Winnie Fok - Bid Chairlady	6
* Message from JC Maria Tchiang - President 1996 of Pan-Mac Junior Chamber	7
* Bid Information	8 - 18
* Conference Organization Chart	19
* Plan of Action	20 - 21
* Tentative Programme	22 - 23
* Pan-Mac Junior Chamber's activities	24 - 25
* Some Information on Macau	26 - 30



## Message

Dear Jaycees,

I have been closely associated with the Macau Jaycees, since the establishment of the Junior Chamber in our territory.

It is, therefore, with great satisfaction that I take this opportunity to publicly praise them for their active and most positive involvement in community affairs and for the important service rendered to the people of Macau.

Being responsible for public administration, education and youth affairs in our government, I also wish to congratulate the Macau Jaycees for making possible a very impressive record of achievements. Their example of dedication and willingness to serve and the high quality of their membership will be excellent assets for the future.

The Macau Jaycees are now bidding for the 1998 Asian Pacific Conference to take place in Macau. I believe they fully deserve the support of Jaycees from other countries and territories to make their bid successful. I am sure that the Conference in Macau will be a most memorable one.

Looking ahead to the many challenges we will have to face, as we approach the 21st century, I wish the Jaycees movement the best possible results in all your efforts.

The Jaycees creed rightly says that "Service To Humanity Is The Best Work Of Life"

I may add that your contribution will make humankind better and your success will be everyone's success.

Thank you!

Dr. Jorge Rangel  
Secretary for Public Administration, Education  
and Youth Affairs, Government of Macau



LEAL  
SENADO  
DE MACAU  
澳門市政廳



### Message

The determination of Macau Junior Chamber to bid for the hosting right of 1998 JCI Asian Pacific Conference in Macau is yet another evidence that Macau Junior Chamber is striving to 'Solidify International Relation & Grasp Every Opportunity'.

The contribution of Macau Junior Chamber to the local community is not to be overlooked, not to mention their previous successful experience in hosting the 1988 JCI Asian Pacific Conference in Macau.

In the meantime, the objective reality in Macau today provides even more favourable conditions to accommodate major international events, with the opening of the Macau International Airport and the many tourism facilities to be projected and completed in the near future.

Leal Senado of Macau, the Macau Municipal Council, would be privileged to be one of the many entities to endorse this undertaking, and would be looking forward with anticipation for the prestigious participants to the 1998 JCI Asian Pacific Conference in Macau.

President of Macau Municipal Council

José Luís de Sales Marques



## Message

Macau is a historic city, both a destination and departure point in the Portuguese diaspora and a geostrategic and socio-cultural gateway into China: A cultural melting pot.

In the past, Macau was a safe harbour and it was from there that the Namban put out to sea, sailing against the wind to Japan and thus contributing to the memory of a shared history.

Nowadays, Macau symbolises how cultures and people can blend. This is reflected in Macau's special atmosphere and unique, multi-cultural way of life set against a backdrop of culinary splendour concocted from flavours from east and west. Similarly, its historic and cultural heritage recalls the sunshine of the Mediterranean while the territory's own culture and courtesy makes it an attractive destination for visitors.

We would be delighted to welcome you to this friendly city in 1998 and to give you the opportunity to experience a place spanning east and west where past and present meet.

Eng. Joao Manuel Costa Antunes  
The Director of The Macau Government  
Tourist Department



## Message

It has been eight years since Macau Junior Chamber last hosted an Asia Pacific Conference in 1988. Our previous experience of hosting an ASPAC Conference is valuable. And from time to time the thought of hosting another one has been in our mind. It is not until now that we are prepared to host another one in 1998, exactly a decade since our last successful experience.

Since 1988, Macau has improved a lot, both in convention and exhibition venue, hotel and superb infrastructure. Macau is now directly accessible by air as its new international airport was opened in late 1995. 1998 is a year of special meaning, it will be another one and a half years before the sovereignty of Macau reverts to China. It is hopefully that all of you can witness Macau before the hand over and at the same time have a great time to compare the immediate year after changeover in Hong Kong if you go to Macau via Hong Kong.

It is particularly encouraging to announce that Pan-Mac Junior Chamber has taken up this challenge to bid for the 1998 Asia Pacific Conference in Macau. With the full support from the Macau Government, Macau Junior Chamber is proud to announce our full endorsement to our chapter and their enthusiastic and energetic Jaycees.

As the National president of Macau Junior Chamber, I am privileged to pledge for the support from all the delegates at the Kanazawa Conference to make 1998 Macau Conference a reality.

A handwritten signature in cursive script, appearing to read 'Frederick Yip'.

Frederick Yip  
National President 1996  
Macau Junior Chamber



### Message

It gives me great pleasure to join with all the Jaycees of Macau to bid for the hosting right of 1998 JCI ASPAC Conference.

All members of the Bidding Team have been focusing their effort in preparing and promoting the bid in local during these years. The bid enjoys full support from all members of Macau Junior Chamber, commercial organizations as well as the major departments of the Macau Government. With the experience of organizing the JCI ASPAC Conference in Macau in 1988, I have every confidence in the members' commitment and ability to offer all members of Jaycee International another successful JCI ASPAC Conference in Macau in 1998.

Macau has long been popular for its historic buildings, vibrant festivals and diverse restaurants. In addition to the massive development of new infrastructure projects in recent years, Macau is well prepared for international events. Therefore, I hope you would have the opportunity of making this visit to explore the many special delights of this historical region.

In closing, I would like to ask for your support to our bid and look forward to welcoming you at our party during this coming JCI ASPAC Conference in Kanazawa.

With best wishes.

A handwritten signature in black ink, consisting of stylized, overlapping characters that appear to read 'Chui Sai-Cheong'.

Chui Sai-Cheong

Conference Director of 1988 JCI ASPAC Macau Conference  
Charter President of Macau Junior Chamber




## Message

Pan-Mac Junior Chamber has been established in Macau for over 12 years. With its past experience of holding JCI ASPAC conference in Macau in 1988, today, over 8 years later, we are well prepared of offering you another JCI ASPAC conference in Macau. Therefore, we would seek your support for the bid to host the 1998 JCI ASPAC conference in Macau again.

Over the years, it is encouraging to see all members of the bid team are working hand in hand for the preparation works, the National board and individual members stand enthusiastically beside Pan-Mac Junior Chamber in promoting the bid. So, we are confident that, if the bid is successful, we hope all jaycees having the opportunity in 1998 of enjoying the results of our hard work.

All members of the bid team are looking forward to meeting you throughout the week in this coming JCI ASPAC conference in Kanazawa. You are welcome both at our party & also back in Macau, especially in 1998 !



Winnie Fok  
Bid Chairlady



## Message

As the President of Pan-Mac Junior Chamber, it is my great honor to send this Message of Greetings to everyone of you to support us to bid for the hosting right of **1998 JCI Area B Conference in Macau.**

Pan-Mac Junior Chamber, being the first LOM in Macau, gained valuable experiences in hosting the 1988 JCI Macau Conference. With a participation of more than three thousands JC members from Asia Pacific and other areas of the world, our chapter achieved an outstanding record in receiving the most foreign JC members in JCI Asia Pacific Area Conference and visitors to Macau as well. Furthermore, positive feedback enhances JC Movements in Macau to a further extend.

1998, a decade from 1988, symbolizes marvelous changes in Macau. Significant improvements in infrastructure, conventions and exhibitions' venues, accommodations, and sight-seeing points that makes Macau the best conference venue for **1998 JCI Area B Conference.**

With the full support from Macau Government, our national chapter -- Macau Junior Chamber, our fellow chapter -- Hou Kong Junior Chamber of Macau and all JC members in Macau, we will built rainbow bridges together to organize a memorable conference for every delegate coming to Macau in 1998.

In this particular moment, the utmost important is to have your vote to support our bidding for the **1998 JCI Area B Conference in Macau.** Thank you for making the most appropriate choice for this coming JCI event.

With my best wishes to all of you.

In Junior Chamber Spirit

A handwritten signature in dark ink, appearing to read 'Maria Tohiang', written in a cursive style.

Maria Tohiang  
President 1996  
Pan-Mac Junior Chamber

※ HOST LOM INFORMATION ※

**A. General Information**

Name of Country Macau Bidding City Macau

Name of Bidding LOM (chapter) Pan-Mac Junior Chamber

Chapter Address Rua C. M. Oliveira No. 17, D-1, Fase 3, Macau

Phone (853) 565218 Tlx - - Fax (853) 355212

Other Jaycee LOMs in City Hou Kong Junior Chamber Total Number of Jaycees in City 117

Proposed Official Conference Dates: 28 May to 31 May, **19** 98

Number of members in LOM (chapter) at present time 60 Date 1996

Number of members in LOM (chapter) preceding year 57 Date 1995

Number of members committed to work on this event All

**B. Are your chapter's financial records audited regularly?** Yes If yes, what is date of last certified audit? \_\_\_\_\_ Attach a copy.

**C. Does your LOM (chapter) have Articles of Incorporation, LOM Bylaws and Constitution?** Yes If yes, please attach a copy. If no, provide a statement from the Chapter board providing documents of a similar nature. NOTE: A site inspection will not be conducted unless this information is provided.

**D. Is your LOM in good and due form with your national organization?** Yes Has your national organization endorsed your bid? Yes Attach a letter from your national organization attesting to these facts. Unless this is provided no site inspection will be conducted and your bid will not be accepted.

**E. Will your local chapter be able to carry advance costs of the bid?** Yes If yes, attach a letter from your local chapter president attesting to this fact. If not, describe how local chapter will carry the advance.

**F. Proposed registration fee for delegates, Senators, observers and spouses ?**

US\$260.00.

**G.** Name of proposed Conference Director and Junior Chamber background. Provide professional resume. \_\_\_\_\_

**H.** If regulations make it necessary, will Host City obtain government certificate confirming that it is entitled to sign such contract with an international or foreign corporation? Yes

**L.** Will Host LOM maintain the Conference Schedule of Events as officially established by JCI? Yes

**J.** List name of person from your chapter who should be contacted about this bid:

NAME: FOK Wai-Fun, Winnie

TITLE: NOM Advisor, Past National President

ADDRESS: Rua do Campo, No. 9-11

7<sup>o</sup> andar "B", Macau

PHONE: (853) 377464 (Residence)

(853) 323976 (Work)

TELEX: --

FAX: (853) 355007 or 329475



**C. PUBLICITY FACILITIES:**

1. How many radio stations in city? Two.
2. How many television stations in city? One (TDM)
3. How many newspapers? Ten (Chinese and Portuguese)
4. What wire services are available?

**D. ENTRY RESTRICTIONS AND DISCRIMINATION:**

JCI requires that:

1. The Host LOM provide, from an official source, a clear expression of any government policy which would prohibit the entry of any foreign national into the Host Country if the Conference were taking place at the time of bidding.
2. Host LOM provide written assurance to JCI that there will be no form of discrimination on its part or on the part of any party, group, association or person connected with the organization or operation of the Conference, against any delegate or other person attending or observing the Conference, because of race, color, religion, national origin or sex, with regard to registration, hotel accommodation, meals, participation in Conference functions or any part of the Conference program.

**E. TRANSPORTATION:**

1. Into the country. Air or Jetfoil from Hong Kong.
2. Into the city (air, rail, etc.) Taxi, bus.
3. Name of closest airport city to the Conference site. Macau
4. Police and official city cooperation expected? (A letter of invitation from these officials would be advisable). Yes.

**F. MISCELLANEOUS:**

Any other helpful information or promises which Host LOM would like to include in bid in order to induce JCI to award the Conference to them.

**※ PROGRAM AND MEETING REQUIREMENTS ※**

**A. HOME HOSPITALITY PROGRAM**

Will you have a home hospitality program? (Capable of hosting up to \_\_\_\_\_ delegates)\_\_\_\_\_

**B. MEETING ROOM REQUIREMENTS**

JCI requires that Host City obtain a commitment for every meeting room to be used officially during the Conference. The commitment, which must accompany the bid, shall specify the maximum capacity of the rooms, and shall specify the date for which they are committed. A detailed listing of meeting room requirements are set forth below.

**1. General Assembly**

- a. Venue: Macau Forum II/Macau Tourists Activities Centre
- b. Seating Capacity: 300/600
- c. Stage Capacity: 30/30
- d. Air-conditioned/Heated: Air-Conditioned
- e. Distance from Headquarters Hotel: 5 minutes by walk
- f. Simultaneous Interpretation Equipment Facilities: Yes
- g. Audio/Visual Facilities: Yes

**2. Opening Ceremony**

- a. Venue: Macau Forum I
- b. Seating Capacity: 3,800
- c. Stage Capacity: 50
- d. Air-conditioned/Heated: Air-conditioned
- e. Distance from Headquarters Hotel: 5 minutes by walk
- f. Simultaneous Interpretation Equipment Facilities: Yes
- g. Audio/Visual Facilities: Yes

**C. CLOSING BANQUET:**

1. Venue: Macau Forum I/Plaza Restaurant
2. Seating Capacity: 1,200 pax/800 pax
3. Meal (menu available): Chinese or western
4. Air-conditioned/Heated: Air-conditioned
5. Distance from Headquarters Hotel: 12 minutes by walk/3 minutes by car
6. Stage Capacity: 50 pax/30 pax
7. Simultaneous Interpretation Equipment Facilities: Yes
8. Comments: \_\_\_\_\_

**D. LUNCHEONS (DELEGATES):**

1. Venue: Federal Restaurant/Plaza Restaurant/New World Hotel/Hotel Beverly Plaza/Macau Tourists Activities Centre
2. Seating Capacity: From 400 to 2,000 pax
3. Catering Arrangements: Western/Chinese/Portuguese
4. Sample Menus and Prices: Buffet style
5. Distance from Headquarters Hotel: 15 minutes by walk
6. Distance from Meeting Rooms: 1 - 15 minutes by walk
7. Comments: \_\_\_\_\_

※ CONVENTION FACILITIES ※

**A. GENERAL INFORMATION:**

Name of convention facility Macau Tourists Activities Centre

Address Macau Forum I

Contact Person \_\_\_\_\_ Phone (853) 7984133

Telex \_\_\_\_\_ Fax \_\_\_\_\_

Air Conditioned:  Auditorium  Meeting Rooms  Lobbies

Are all meeting areas in the convention center accessible to the disabled? Yes

Does the convention center have an exclusive caterer? No/provide restaurant space

Name of the caterer: Cafe Leon (have past experience)

**B. PARKING**

Will adequate free parking be provided at the convention facility? Yes (Attach letters of verification.)

If no, describe alternative parking and costs.

**C. AUDITORIUM CAPACITY**

What is the auditorium capacity for business sessions? 300 pax (Attach floor plan of auditorium with specifications.)

**D. MEETING ROOM CAPACITY:**

- a) What is the convention facility total meeting room capacity? (List all rooms with capacity and attach floor plans with specifications.)

Macau Tourist Activities Centre	-	600 pax
" "	-	300 pax
Hotel Mandarin Oriental	-	300 pax
" "	-	200 pax
" "	-	200 pax
" "	-	100 pax
" "	-	100 pax

- b) Are overhead projectors/slide projectors and flip charts really available for the meeting?

Yes.

**E. EXHIBITS:**

Exhibit hours will be 8:00 am - 5:00 pm, three (3) days of the Conference. Must be an area that can be secured between the hours of 5:00 pm and 8:00 am. (Attach brochure and floor layouts.)

What is the estimated cost of exhibit space per square foot/meter to exhibitors? US\$8-US\$10

❖ HEADQUARTERS HOTEL ❖

Proposed Headquarters Hotel Information (Attach brochure) - Final selection and/or confirmation of Headquarters Hotel will be made by the Secretary General of Junior Chamber International. All meeting space in proposed headquarters property must be available to Junior Chamber International beginning four (4) days prior to the Conference.

Hotel Name Mandarin Oriental, Macau

Contact Name & Title Ms. Anita Ao, Senior Sales Manager

Hotel Address 956-1110 Avenida de Amizade, P.O. Box 3016, Macau

Telephone (853) 567 888 Telex 88588 OMA OM Fax (853) 594 589

**A. ROOM BLOCK AND RATES:**

1. Total number of rooms in hotel 435
2. Maximum number of rooms which can be committed 200 (negotiable)

**B. TYPES OF ROOMS IN ROOM BLOCK:**

ROOM CATEGORY (i.e., standard, medium, deluxe)	NUMBER OF ROOMS				
	SINGLE	DOUBLE	TWIN	1 BR SUITES	2 BR SUITES
Superior			84	4(twin)	
Superior King		24		16	8
Deluxe			173		
Deluxe King		55			

ORIGINAL COST (Weekdays)

=====

Standard - US\$100/night ) twin & double same price

Deluxe - US\$120/night )

1-bedroom suite - US\$400/night (30% discount + 15% charges)

2-bedroom suite - US\$550/night (30% discount + 15% charges)

Presidential suite- US\$2,000/night (30% discount + 15% charges)

Full rate for all suites on weekends (about 20% higher than weekdays and about 10% higher of inflation).

Standard and deluxe open for future negotiation.

※ HOUSING ※

**A. HOUSING REQUIREMENT:**

JCI requires that at least 800 first-class hotel rooms (including Headquarters Hotel) be available within a two-mile radius of the Headquarters Hotel. Please state the number of such hotel rooms that your city has within the two-mile radius. (Four copies of a map of the map of the area, marked with all hotels and venues, including the distance of each official venue to the Headquarters Hotel, must be attached to the bid.)

**B. HOUSING:**

All rooms must be available two (2) days prior to Opening Ceremony.

1. Number of hotel rooms within a one (1) 1,500 or two (2) 600 mile radius of the convention center.
2. Total number of hotel rooms committed for the Conference within: a one (1) 500 or two (2) 350 mile radius of the convention center.

**NOTE:** Written commitments from individual hotels and motels (or the Convention Bureau, acting on behalf of the properties) are required for a minimum of 800 rooms for the Conference period. Each room must contain a bath, telephone, and adequate climate control system (air-conditioning and/or heating).

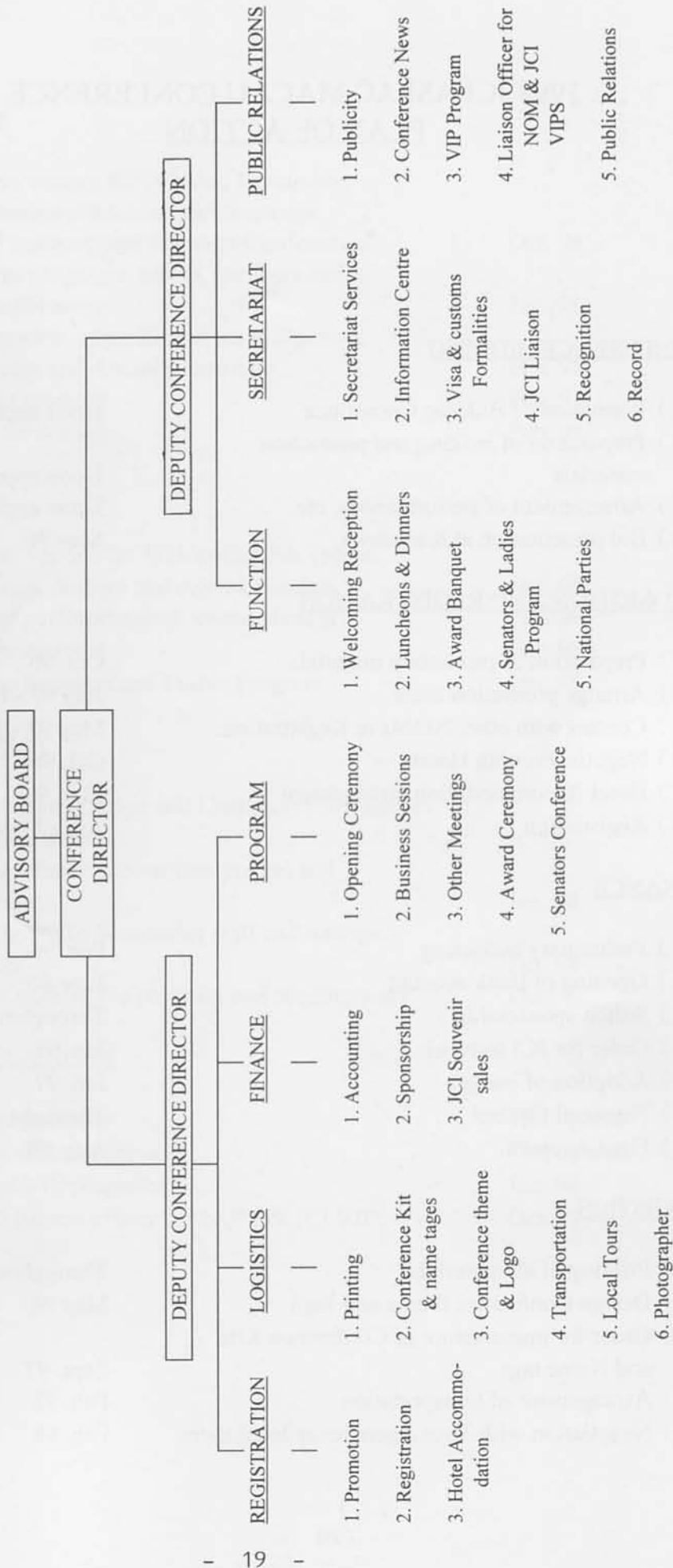
**C. PROVIDE THE FOLLOWING INFORMATION FOR ALL HOTELS:**

- Cancellation policy
- Confirmation policy
- Net rates versus rack rates
- Complimentary room policy
- Payment policy

**D. RATES GUARANTEE:**

Are the rates guaranteed at the time of the Conference? No If not, what percentage (%) increase is expected? 15%

1998 JCI ASPAC MACAU CONFERENCE ORGANIZATION CHART



1998 JCI ASPAC MACAU CONFERENCE  
PLAN OF ACTION

1. CONFERENCE BIDDING

- |  |                      |
|--|----------------------|
| (1) Formation of Bidding Committee                 | Upon approval by NOM |
| (2) Preparation of bidding and promotion materials | Upon approval by NOM |
| (3) Arrangement of performances, etc.              | Upon approval by NOM |
| (4) Bid presentation at Kanazawa                   | May 96               |

2. PROMOTION AND REGISTRATION

- |   |                   |
|---|-------------------|
| (1) Preparation of promotion materials      | Oct. 96           |
| (2) Arrange promotion tours                 | July 97 - Feb. 98 |
| (3) Contact with other NOMs re Registration | May 97 - Feb.98   |
| (4) Negotiation with Hotels                 | Oct. 96           |
| (5) Hotel Accommodation arrangement         | Mar. 98           |
| (6) Registration                            | Apr.- May 98      |

3. FINANCE

- |                             |            |
|-----------------------------|------------|
| (1) Preliminary budgeting   | Feb. 96    |
| (2) Opening of Bank account | June 96    |
| (3) Solicit sponsorship     | Throughout |
| (4) Order for JCI souvenir  | Jan. 98    |
| (5) Adoption of budget      | Jan. 97    |
| (6) Financial Control       | Throughout |
| (7) Final Account           | Aug. 98    |

4. LOGISTICS

- |  |            |
|--|------------|
| (1) Printing of all materials                              | Throughout |
| (2) Design Conference theme and logo                       | May 96     |
| (3) Order for manufacture of Conference Kits and Name tags | Sept. 97   |
| (4) Arrangement of transportation                          | Feb. 98    |
| (5) Negotiation with Tour Agencies re local tours          | Feb. 98    |

## 5. PROGRAM

- |   |         |
|---|---------|
| (1) Confirm venues for Opening Ceremony, other business sessions and meetings, Award banquet, and Senators Conference | Oct. 96 |
| (2) Confirm programs, topics, speakers and Guest of Honour  | Jan. 98 |
| (3) Arrangement of performances at Opening Ceremony and Award Ceremony  | Feb. 98 |
| (4) Arrange catering  | Feb. 98 |
| (5) Order for Awards  | Feb. 98 |

## 6. FUNCTION

- |  |         |
|--|---------|
| (1) Confirm venues for Welcoming Reception, luncheons, dinners and Award Banquet | Oct. 96 |
| (2) Arrange performance at Award Banquet   | Feb. 98 |
| (3) Arrange catering   | Feb. 98 |
| (4) Arrange Senators and Ladies program  | Jan. 98 |

## 7. SECRETARIAT

- |   |         |
|---|---------|
| (1) Contact Immigration and Customs re formalities and requirements | Apr. 97 |
| (2) Confirm Simultaneous Interpreters and equipments                | Jan. 98 |
| (3) Recruitment of Secretariat staff and arrange facilities         | Jan. 98 |
| (4) Liaison with JCI re program and requirements                    | Dec. 97 |

## 8. PUBLIC RELATIONS

- |  |            |
|--|------------|
| (1) Arrange publicity                          | Throughout |
| (2) Liaison with the press                     | Throughout |
| (3) Arrange VIP programs                       | Jan. 98    |
| (4) Recruit liaison officer for NOM & JCI VIPs | Oct. 97    |



May 30, 1998

Saturday

08:00 - 09:00	VIP Breakfast
09:00 - 20:00	Registration
09:00 - 18:00	JCI Training Institute Prime (2)
09:00 - 12:00	Workshop (1)
09:00 - 12:00	Workshop (2)
09:00 - 17:00	Senators' Programme
09:00 - 17:00	Award Judging (2)
12:00 - 14:00	Delegates Luncheon
12:00 - 14:00	Conference Director's Reception
14:30 - 16:30	World Speaking Competition
19:00 - 21:00	Hosting NOM President's Reception
20:00 - 24:00	International Parties

May 31, 1998

Sunday

08:00 - 09:00	VIP Breakfast
09:00 - 12:00	Closing General Assembly
12:00 - 14:00	VIP Luncheon
15:00 - 17:00	APDC Meeting (2)
17:30 - 19:30	Award Ceremony
19:30 - 24:00	Conference Ball

## Pan-Mac Junior Chamber's Activities



1988 JCI ASPAC Macau Conference



1989 Jaycee Day and Photo Exhibition



1988 JCI ASPAC Macau Conference



1990 Friendship Pact with Kowloon JC



1988 Sisterhood pact with Itami JC



1992 Student Cultural Exchange Program

## Pan-Mac Junior Chamber's Activities



1993 Jaycees Smart Games



1994 Foshan Leadership Training Camp



1994 Macau Jaycees 10th Anniversary Ball



1995 The Most Outstanding High School Students of Macau



1994 Macau Jaycees 10th Anniversary Ball



1996 Children's New Year Trip on Air Bus 320

## SOME INFORMATION ON MACAU

### LOCATION

Macau is situated on the southeastern coast of China. The city is built on the peninsula; two bridges of 2.5 kms and 4.5 kms respectively link it to its nearest island of Taipa, which in turn is joined to Coloane by a 2.2 km-long causeway.

At the extreme northern end of the peninsula is the Border Gate which leads to the Zhuhai and Zhongshan areas of China. Some 60 kms to the east-northeast, across the mouth of the river, is Hong Kong, an important financial and trading centre.

### AREA AND POPULATION

Macau has a total area of 20.96 sq. km. The total population is about 420,000 people, of which 95% are Chinese and 5% are Portuguese, Europeans and from other regions, living in the peninsula of Macau and in the two islands of Taipa and Coloane.

### LANGUAGE

Portuguese and Chinese are the two official languages, with Cantonese the most widely spoken. English is Macau's third language and is generally used in trade, tourism and commerce.

### GOVERNMENT

Macau is officially a territory under Portuguese administration. It enjoys administrative and financial autonomy under the Organic Statutes published in 1976 and revised in May 1990. The Governor is appointed by the President of The Portuguese Republic and is aided by an Advisory Council and, in his executive functions, by the maximum of seven Under-Secretaries in charge of relevant sectors of the administration. There is a Legislative Assembly composed of 23 deputies members, the majority of which is elected.

### TRAVELLING TO MACAU

#### a) Come by Air

Macau has its own International Airport, which opened for operations in December, 1995. The airport is fully capable of handling Boeing 747 long haul flights to North America, Europe, Oceania and Africa. After 5 months of operations 14 regular airline companies including Air Macau, the territory's flag carrier, serve the Macau International Airport flying to 24 cities, 12 of which are in mainland China. The first longhaul European passenger flights by

TAP Air Portugal and Sabena have started service between Macau, Lisbon and Brussels.

Meanwhile, the helicopter service, that flies nine round-trips a day has become the fastest and most comfortable means of connecting Hong Kong and Macau.

#### b) Come by Sea

Visitors have a choice of fast vessels-jetfoils, jetcats, turbocats, hover-ferries and high-speed ferries. The departure terminals in Hong Kong are Shun Tak Centre, on Connaught Road, Hong Kong Island, and China Hong Kong City in Kowloon.

There are more than 100 scheduled sailings each way throughout the day, and there are frequent night service. Jetfoils operate round the clock.

### ENTRY PROCEDURES

#### Passport

All persons entering or leaving Macau must be the holder of a passport or a valid travel document.

#### Visas

Visas are required by all visitors except:

a) Nationals of Australia, Austria, Brazil, Canada, EEC Countries, Finland, India, Japan, Malaysia, Mexico, New Zealand, Norway, Philippines, Singapore, Sweden, Switzerland, South Africa, South Korea, Thailand and United States of America for a stay of less than 20 days;

b) Hong Kong residents with Hong Kong Identity Card, Hong Kong Permanent identity Card or Hong Kong Re-entry Permit, for a visit of up to 90 days.

Visas are available on arrival in Macau.

There are three types:

Individual - 205 patacas for an individual traveller for a single stay of up to 20 days in Macau, children under 12 years of age pay 102.50 patacas.

Family - 410 patacas for couples, husband travelling with wife and/or children (under 12 years of age) of same surname or with proof of their relationship.

Group - 103 patacas per person for bona fide groups of 15 or more.

Visas may also be obtained from Portuguese Consulates.

Nationals of countries which do not maintain diplomatic relations with Portugal MUST obtain their visas from an overseas Portuguese Consulate and may not obtain them on arrival.

## AIRPORT TAX

All departing passengers will pay an AIRPORT TAX of 20 patacas. In addition, passengers departing for destinations in China will pay a PASSENGER TAX of 50 patacas (those aged two to 12 years) and 80 patacas for all other; passengers departing for other destinations will pay a tax of 80 patacas (those aged two to 12) and for all others 130 patacas.

Taxes will not be levied on: those under two years; those in direct transit; those in direct transit who need not complete Macau entry formalities; or those on flights forced to return by bad weather or other causes.

## EMBARKATION TAX

There is a HK\$26 departure tax levied in Hong Kong (usually included in the price of tickets). Macau levies a tax of MOP\$22 which can be paid when buying return tickets.

## CUSTOMS

On arrival, visitors are not usually bothered with customs formalities, but may be subject to a routine check. There is a 5% ad valorem duty on importation of electrical appliances and equipment.

On departure, there are no export duties on any articles: antiques, gold, jewellery, radios, cameras, etc.

However, Hong Kong customs authorities will only allow visitors one litre of spirits plus 200 cigarettes or 50 cigars or 250 gr. of tobacco into the British Colony duty free.

## CURRENCY

The pataca (composed of 100 avos) is the official unit of currency in Macau. It is available in coins and banknotes in denominations of:

Coins: 10, 20, 50 avos; 1 & 5 patacas.

Banknotes; 10, 50, 100, 500 & 1000 patacas

The Macau pataca is pegged by the Government to the Hong Kong dollar which is circulated freely in Macau - at the rate of \$103.20 patacas = HK\$100.00, with a permissible variation of up to 10%. Roughly eight patacas equal one US dollar.

Foreign currency or travellers cheques may be changed at hotels, banks and licensed money changers, which are conveniently located throughout the city.

Major credit cards are accepted in many leading hotels and restaurants.

There are no restrictions on the amount of currency which can be brought in or taken out.

## TOURISM

Tourism also plays a relevant role in the economy of Macau, hotel capacity is increasing rapidly, according to statistics, by the end of 1995, it is about 8,500 hotel rooms available, which, couple with existing cultural and historical heritage makes Macau a very distinctive and unique tourist destination.

## SHOPPING

Macau's most popular buys remain jewellery (particularly gold), Chinese antiques, porcelain, pottery, electric gadgetry, cameras, watches, beading work, knitted wear, etc. They are available at duty free prices because Macau is a free port, and no sales tax is charged, but bargaining is standard on many items.

## EATING IN MACAU

Macau is a great place to find good restaurants with different types of cuisine: Portuguese, Macanese, Chinese, Shanghainese, European, Japanese, etc.

Try the delicious and distinctive Portuguese food. It's just as if you were in Portugal!

The Macau food is another speciality, found nowhere else and is a combination of Portuguese, Indian, Malay and Chinese cuisines.

## ENTERTAINMENT

For many visitors, the casinos of Macau are sufficient entertainment in themselves. There are nine casinos in Macau, all operated under Government franchise by the Sociedade de Turismo e Diversoes de Macau (STDM) and rules are standard in all gaming halls. With the exception of the Victory Casino in the Macau Jockey Club, all casinos operate round the clock.

For others, however, there is a surprising variety of activities available; a lot of the sports and night-life outlets are centred on the larger and newer hotels, but all it needs is a little effort, and some enthusiasm, for the longer-staying visitor to discover the multi-faceted attractions of Macau.

The Macau Jockey Club is situated just across the bridge from Downtown Macau on the Taipa Island. It is one of the most technologically advanced racecourses in the Asia Region. Over 900 fine thoroughbreds are in training.

Race meetings are held every weekend during the racing season, occasionally on Wednesday and Thursday evenings and also during major festivals such as the New Year, Chinese New Year, Easter, etc.

# VIEW OF MACAU



Largo do Senado Square

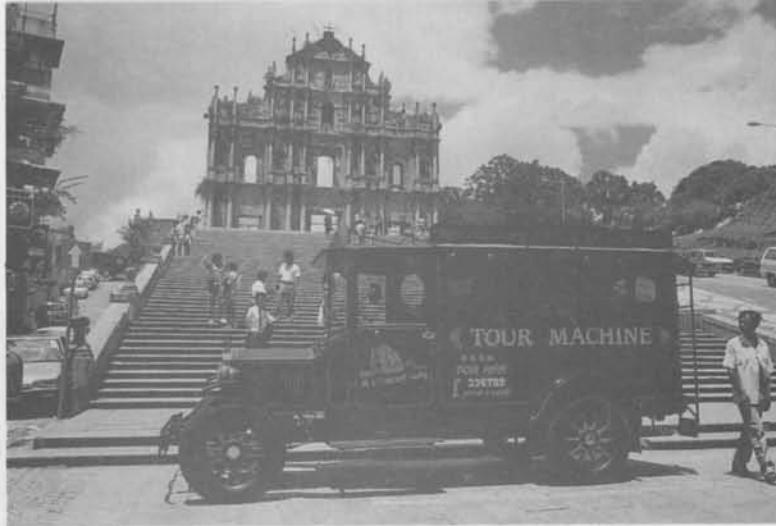


Macau Gate



Church of our Lady of Penha

## VIEW OF MACAU



Ruins of St. Paul's



Macau - Taipa Bridge



Praia Grande Bay

